

SSFA comparison

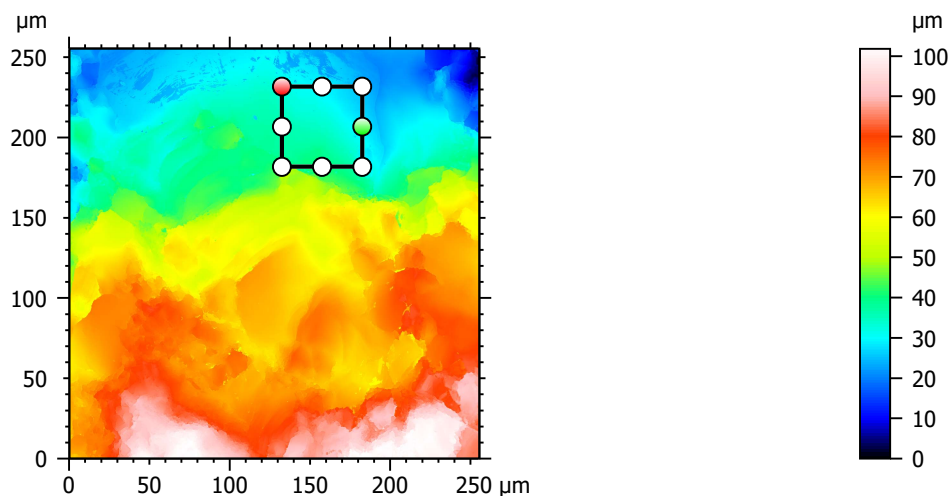
Template to process all lithic surfaces acquired with the Zeiss LSM 800 with the 50x/0.95 objective.

A. Processing

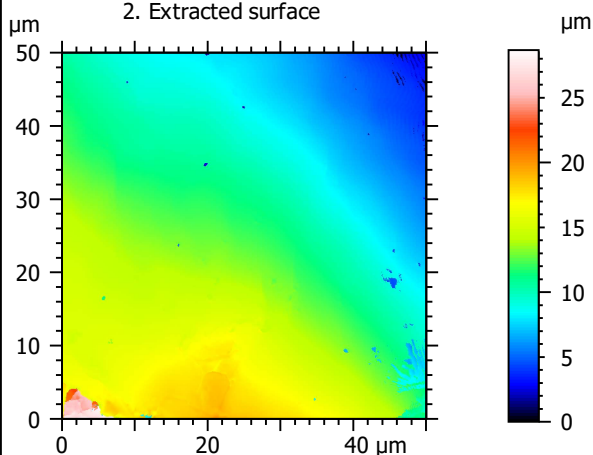
Identity card

Name:	QTZ3-3_LSM_50x-0.95_20190418_Area2_Topo		
File path:	D:\Data\3Ddata\SSFA\Lithics\Original surfaces\QTZ3-3_LSM_50x-0.95_20190418_Area2_Topo.sur		
Created on:	4/18/2019 1:55:42 PM		
Studiable type:	Surface		
Axis:	X		
Length:	255.5	µm	
Size:	3000	points	
Spacing:	0.08519	µm	
Axis:	Y		
Length:	255.5	µm	
Size:	3000	points	
Spacing:	0.08519	µm	
Axis:	Z		
Layer type:	Topography		
Length:	101.8	µm	
Size:	65532	digits	
Spacing:	0.001553	µm	
NM-points ratio:	0.000 % (0 Pts)		

1. Acquired surface

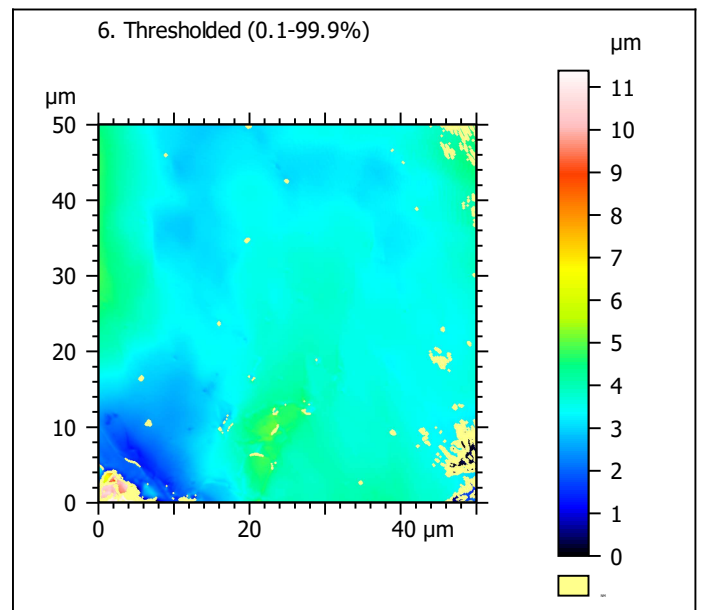
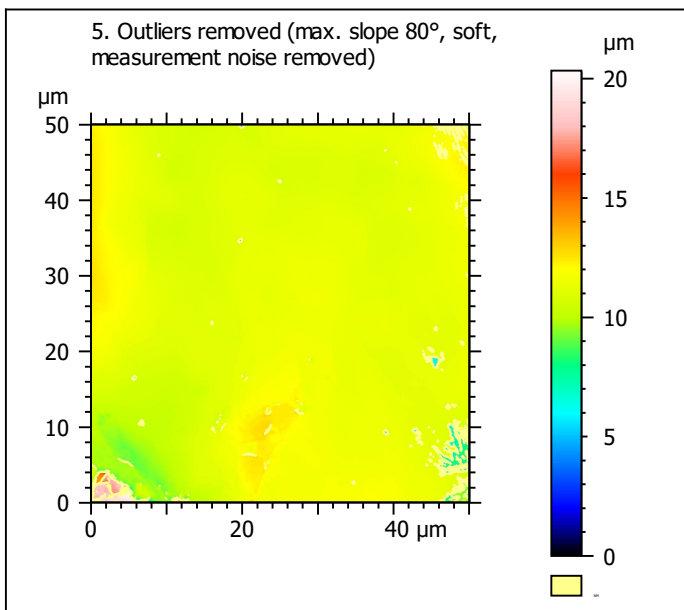
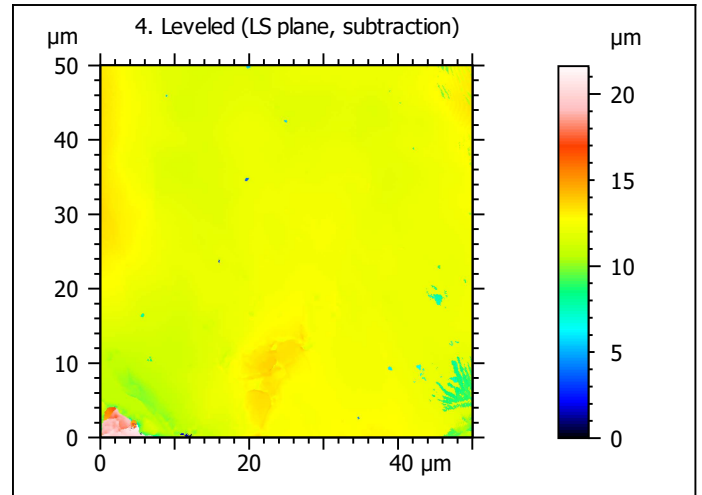
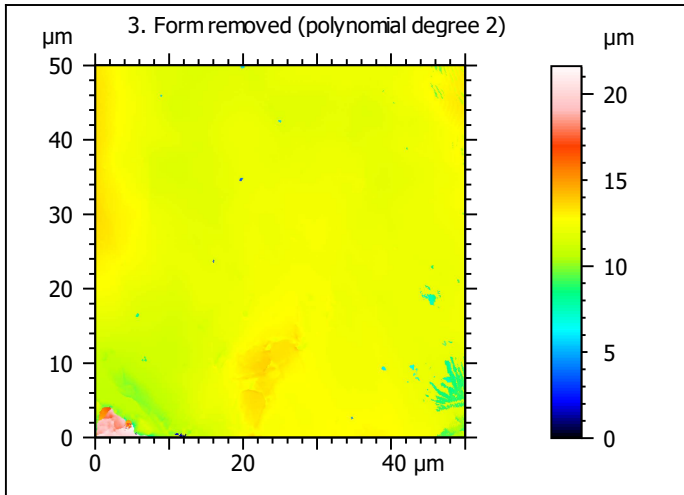


2. Extracted surface



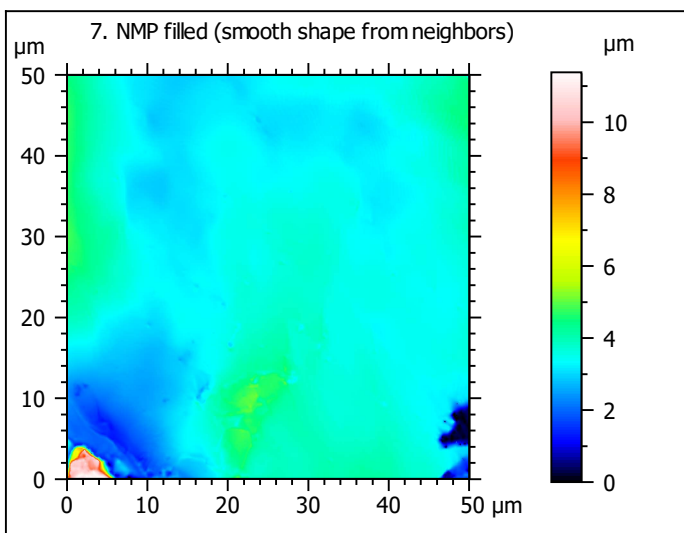
Identity card

Name:	QTZ3-3_LSM_50x-0.9...opo > Extracted area		
Axis:	X		
Length:	50.00	µm	
Size:	588	points	
Axis:	Y		
Length:	50.00	µm	
Size:	588	points	
Axis:	Z		
Layer type:	Topography		
Length:	28.67	µm	
Size:	18455	digits	
NM-points ratio:	0.000 % (0 Pts)		

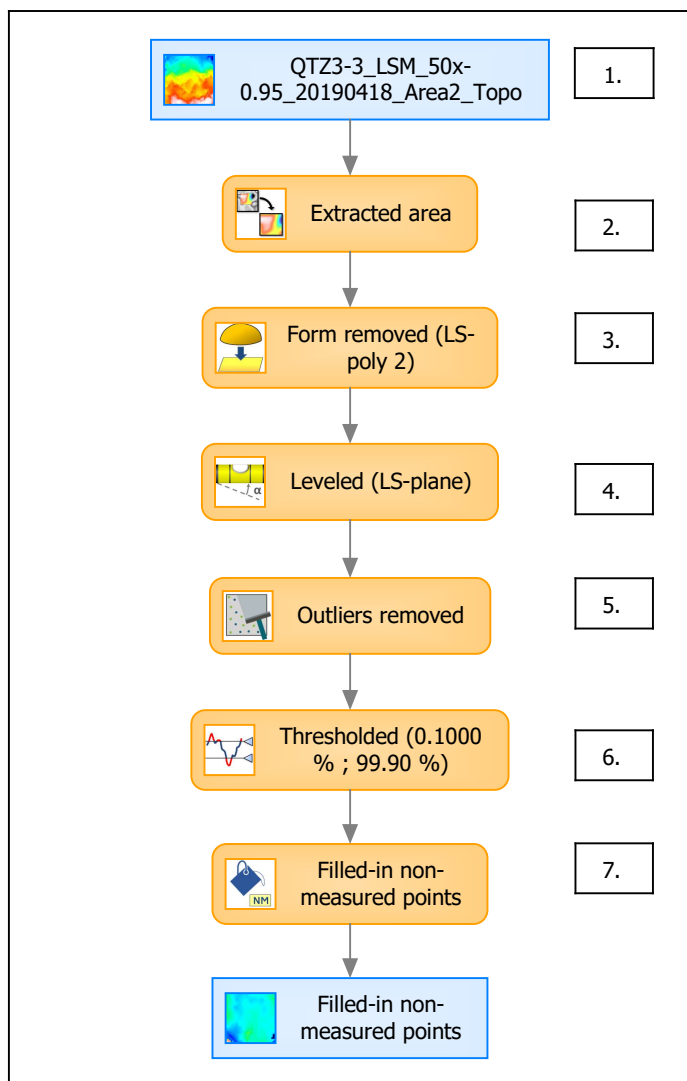


Identity card	
Name:	QTZ3-3_LSM_50x-0.9...e) > Outliers removed
Axis:	Z
NM-points ratio:	2.898 % (10020 Pts)

Identity card	
Name:	QTZ3-3_LSM_50x-0.9...0.1000 % ; 99.90 %)
Axis:	Z
NM-points ratio:	3.092 % (10691 Pts)



B. Summary



Identity card

Name: QTZ3-3_LSM_50x-0.95_20190418_Area2_Topo > Extracted area ...resholded (0.1000 % ; 99.90 %) > Filled-in non-measured points

Studiable type: Surface

Axis: X

Length: 50.00 μm
Size: 588 points
Spacing: 0.08519 μm

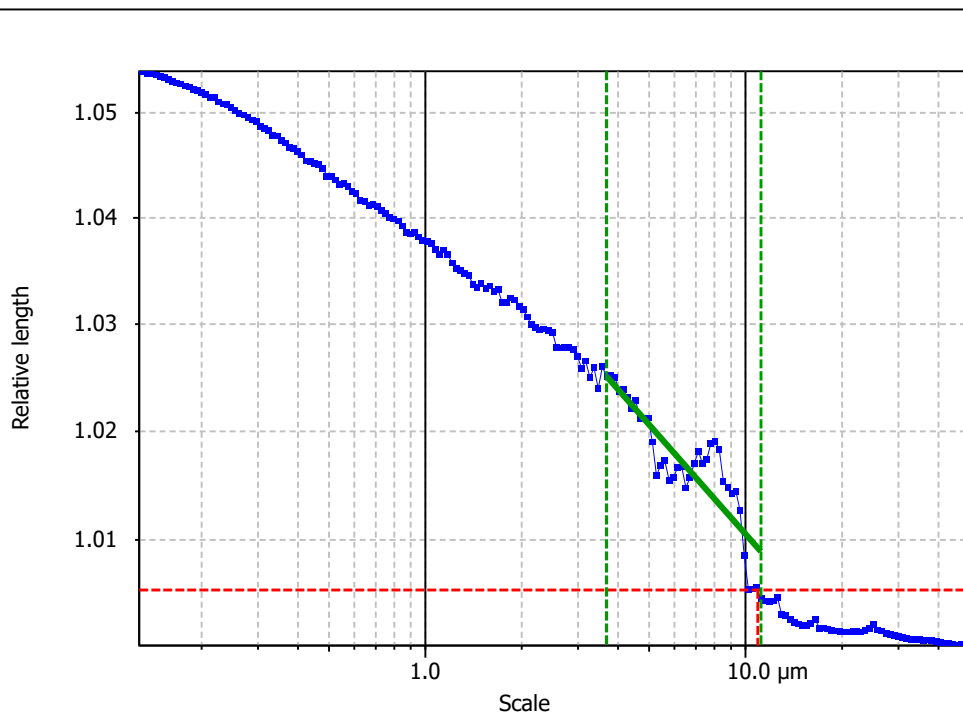
Axis: Y

Length: 50.00 μm
Size: 588 points
Spacing: 0.08519 μm

Axis: Z

Layer type: Topography

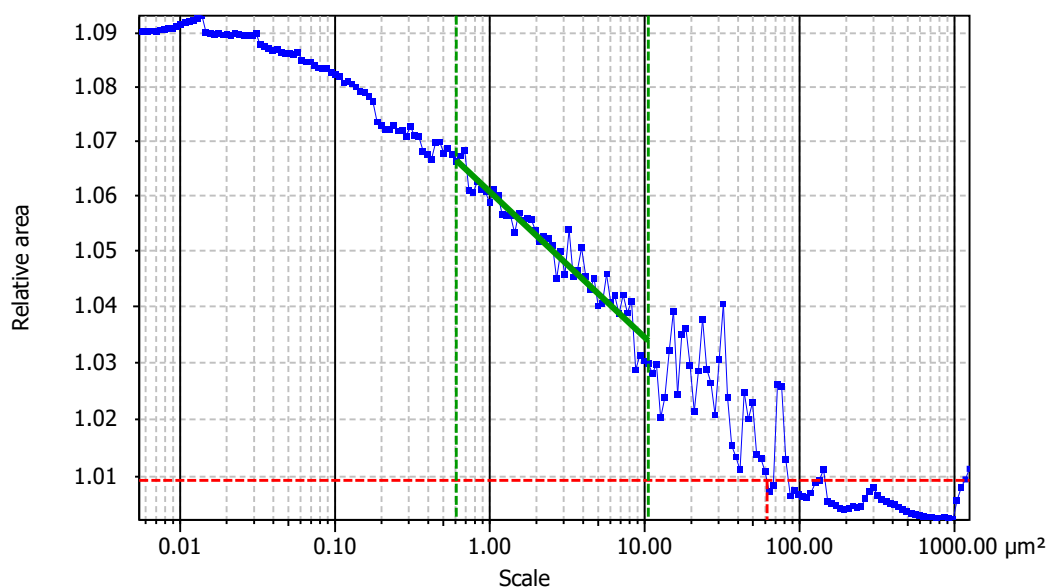
Length: 11.39 μm
Size: 7330 digits
Spacing: 0.001553 μm

**Information**

Method	Length-scale (rows)
--------	---------------------

Parameters

Parameters	Value	Unit	Comment
epLsar	0.004995		Length-scale anisotropy (<i>Sfrax</i>) (1.8 μm, 5°)
NewEplsar	0.01795		Length-scale anisotropy (1.8 μm, 5°)

**Information**

Method	Area-scale (four corners)
--------	---------------------------

Parameters

Parameters	Value	Unit	Comment
R ²	0.9234		Reg. coefficient R ²
Asfc	10.86		Fractal complexity
Smfc	0.9973	μm ²	Scale of max complexity
HAsfc9	10.32		Heterogeneity of Asfc (3x3)
HAsfc81	36.42		Heterogeneity of Asfc (9x9)